

**MATTHEW CHENG ARCHITECT INC.**

Unit 202 - 670 EVANS AVENUE  
VANCOUVER, BC V6A 2K9  
Tel: (604) 731-3012 / Email: matthew@mcai.ca

THIS DRAWING MUST NOT BE SCALED. THE GENERAL CONTRACTOR SHALL VERIFY ALL DIMENSIONS AND LEVELS PRIOR TO COMMENCEMENT TO WORK. ALL ERRORS AND OMISSIONS SHALL BE REPORTED IMMEDIATELY TO THE ARCHITECT. COPYRIGHT RESERVED. THIS PLAN AND DESIGN ARE AND AT ALL TIMES REMAIN THE EXCLUSIVE PROPERTY OF MATTHEW CHENG ARCHITECT INC. AND MAY NOT BE USED OR REPRODUCED WITHOUT PRIOR WRITTEN CONSENT.

Revision:

REV	YY-MM-DD	DESCRIPTION	DRWN	CHK

Architect's Sign and Seal

Project Title

**PROPOSED 30-UNIT TOWNHOUSES**

2453 LABIEUX RD.,  
NANAIMO, B.C.

Sheet Title

**SHADOW ANALYSIS**

RECEIVED  
RA488  
2023-AUG-11  
Current Planning

Drawn: DS

Checked: MC

Scale: 12" = 1'-0"

Project Number: 22NTH01

Print Code:

Revision Date:

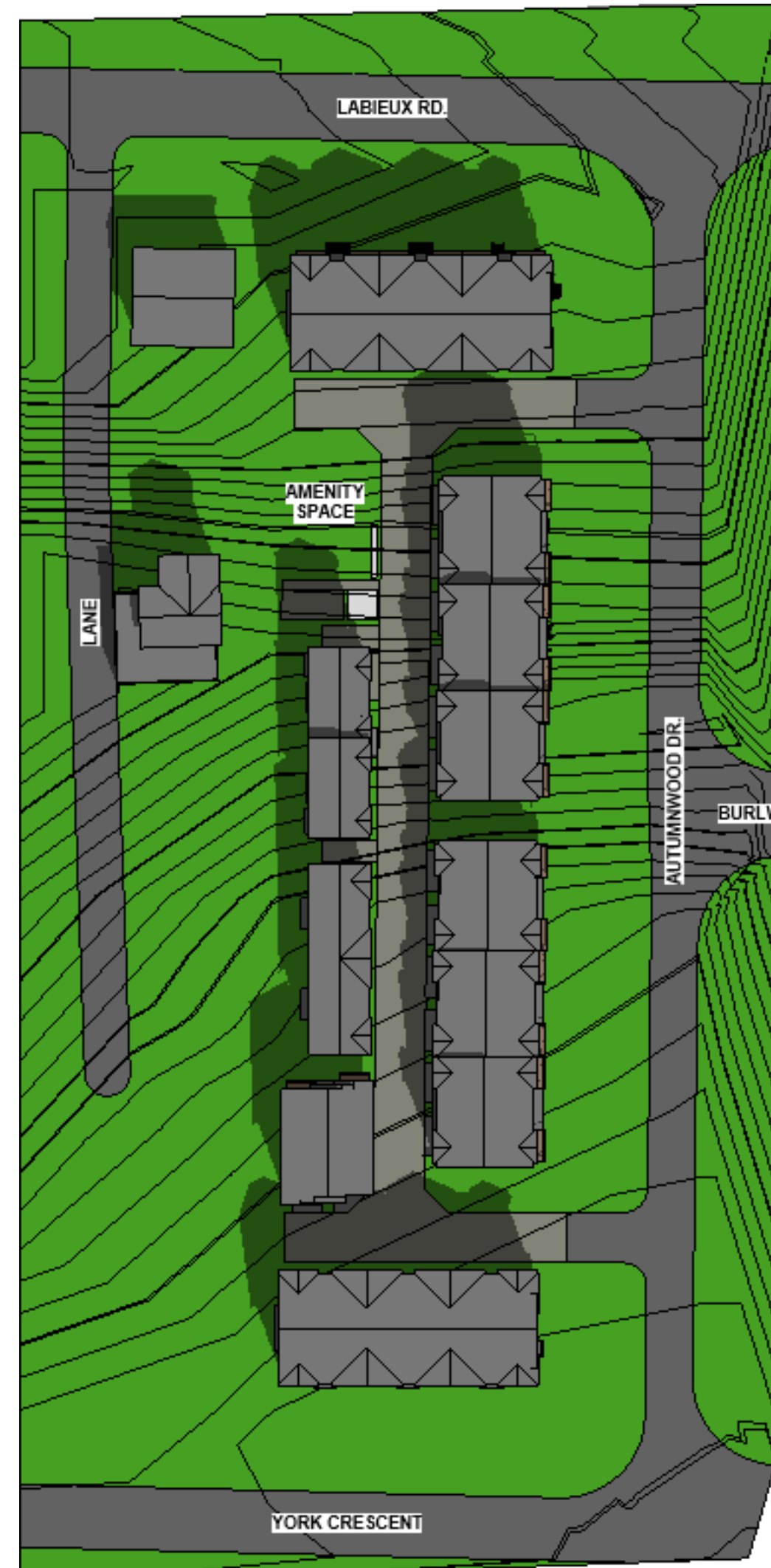
Print Date: 8/11/2023 2:43:27 PM

Dwg. No.:

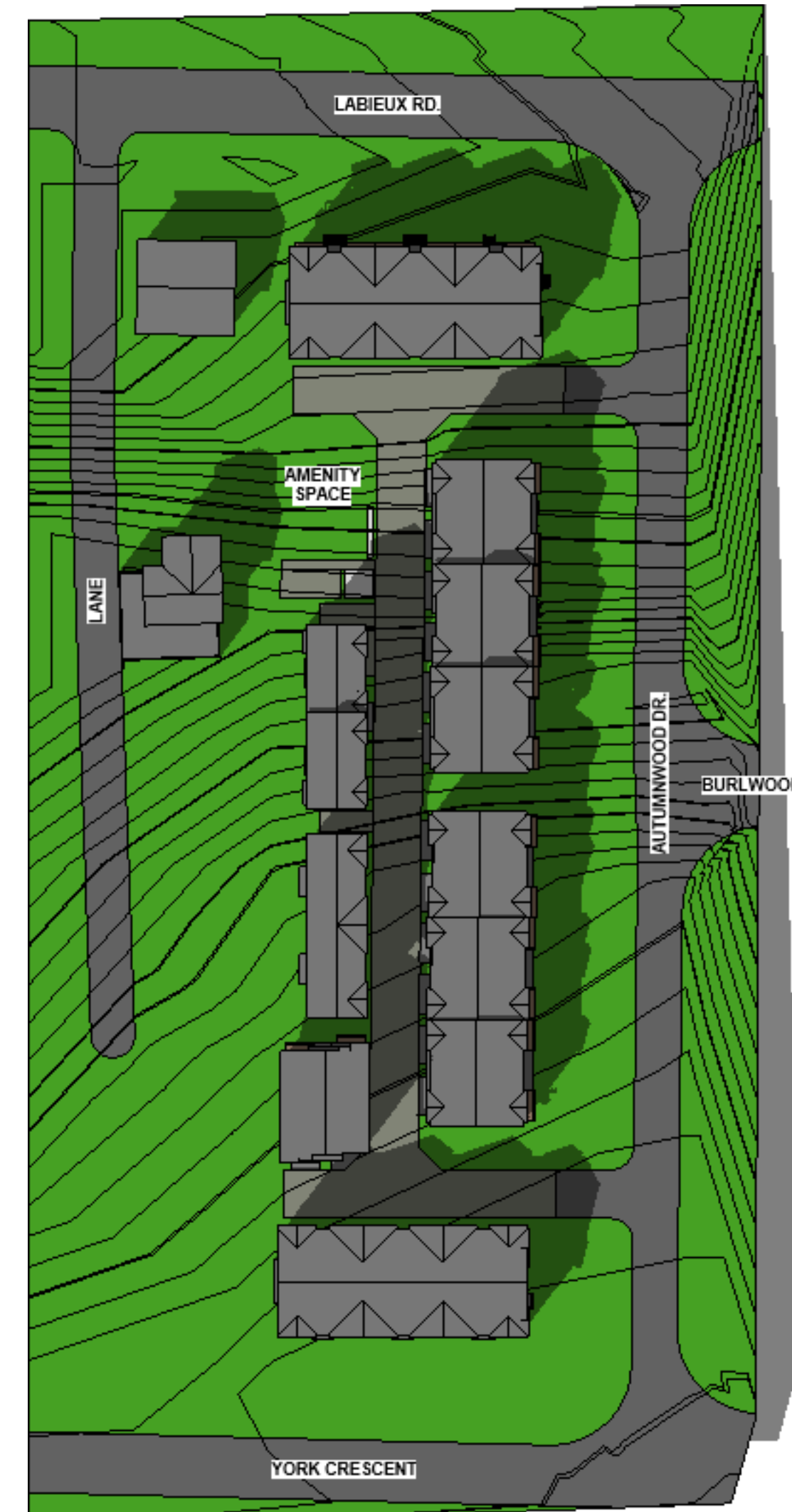
A0.4



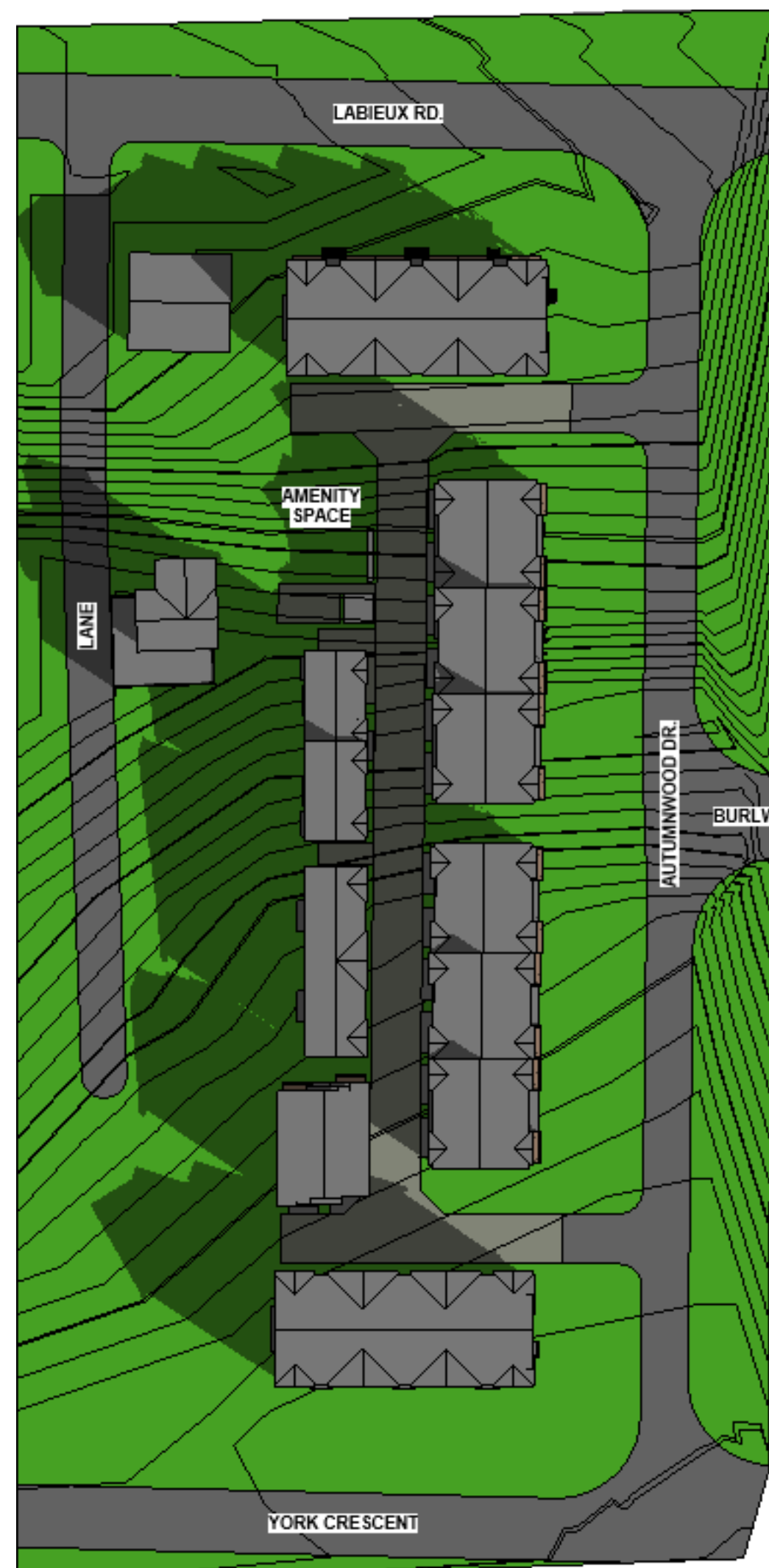
① FALL EQUINOX 10AM  
12" = 1'-0"



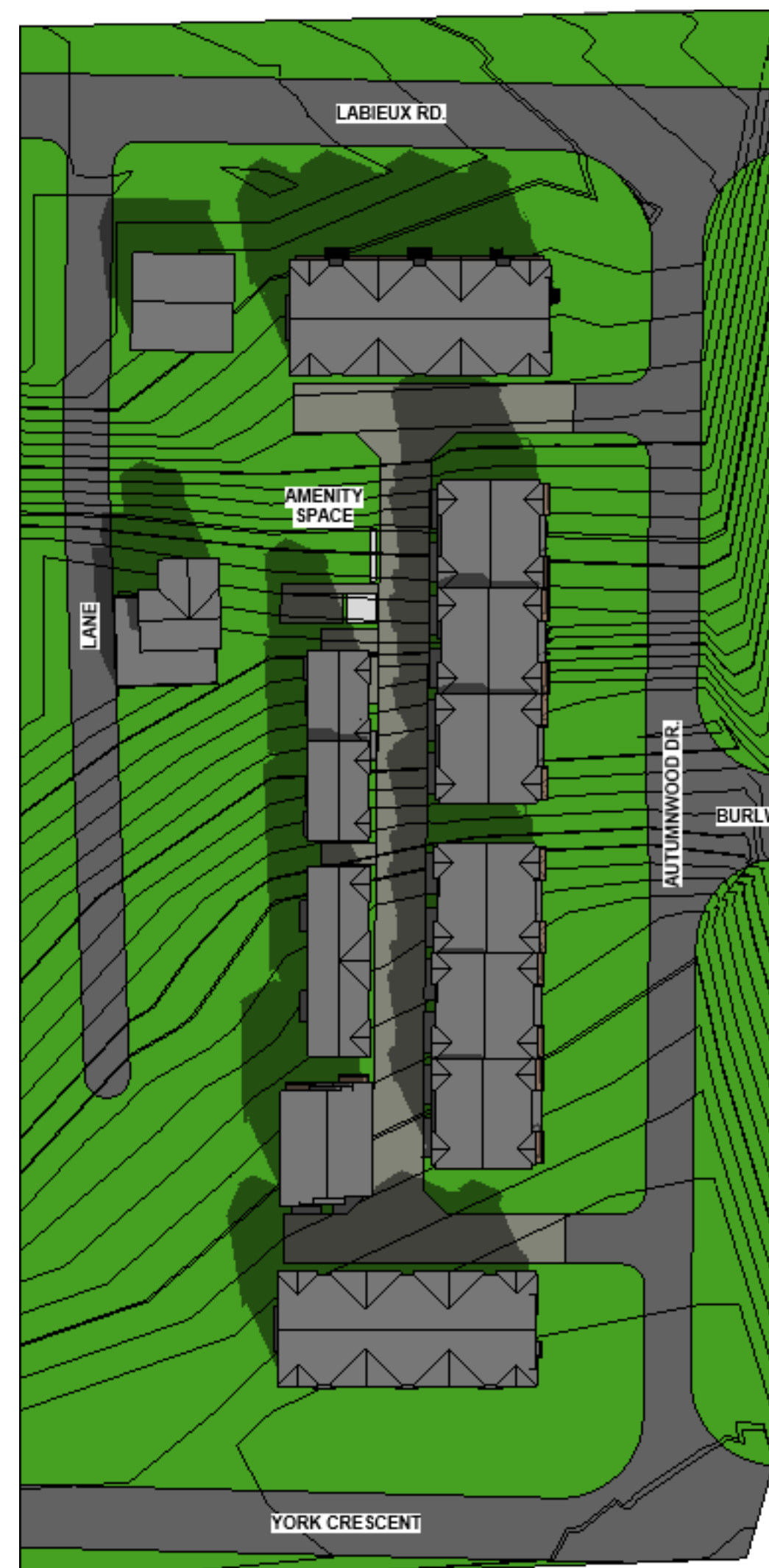
② FALL EQUINOX 12PM  
12" = 1'-0"



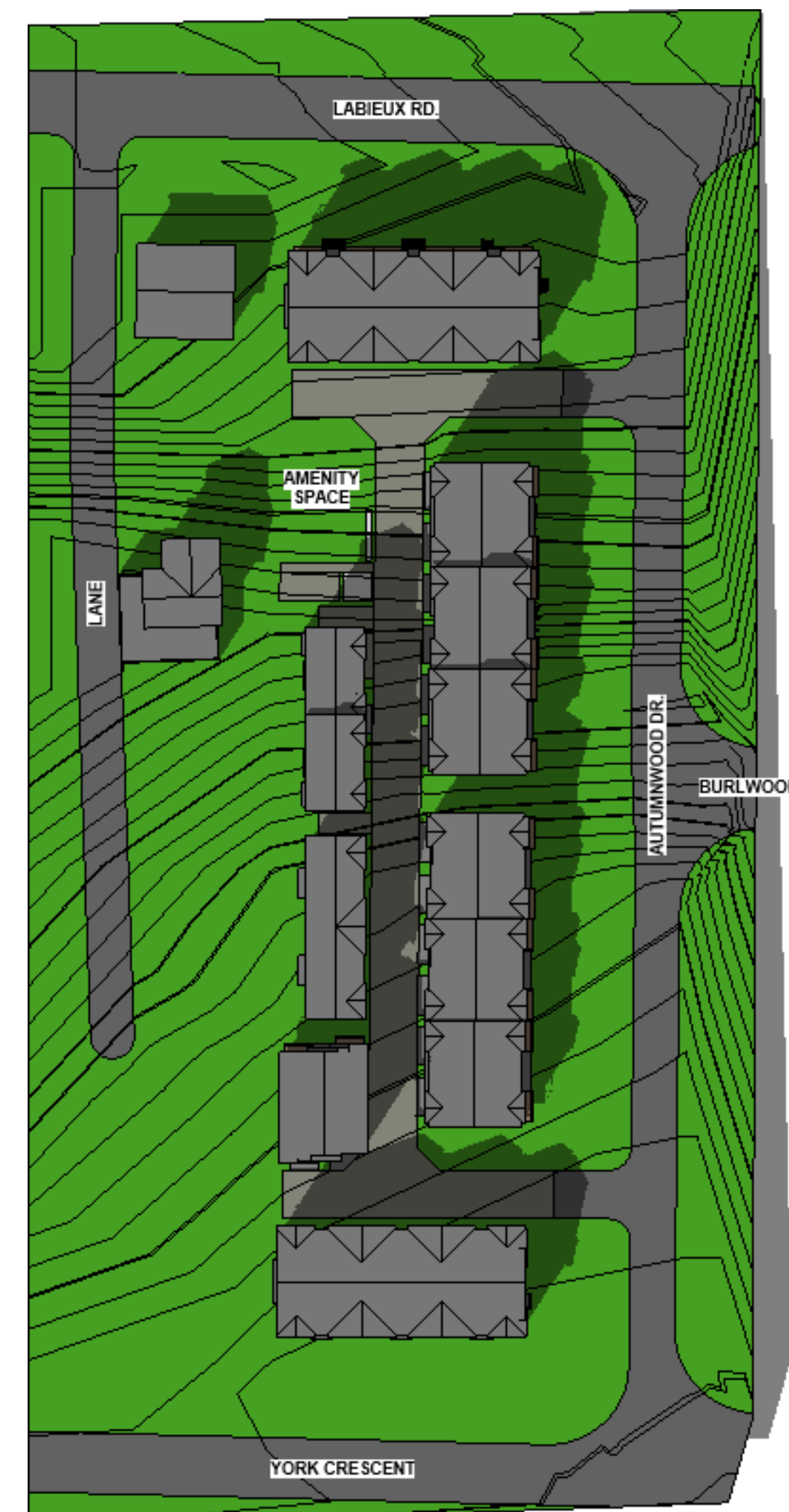
③ FALL EQUINOX 3PM  
12" = 1'-0"



④ SPRING EQUINOX 10AM  
12" = 1'-0"



⑤ SPRING EQUINOX 12PM  
12" = 1'-0"



⑥ SPRING EQUINOX 3PM  
12" = 1'-0"